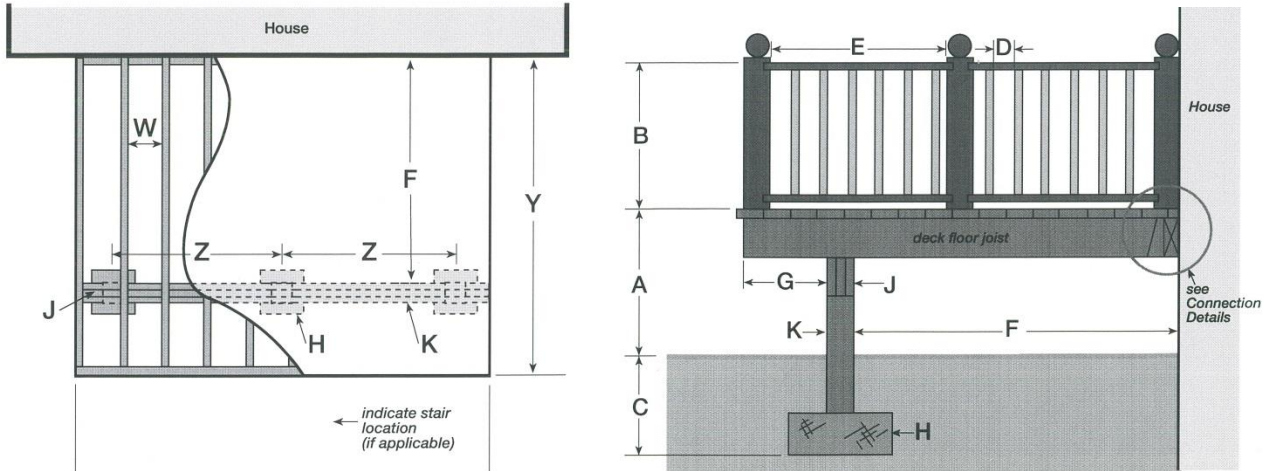


Deck Permit Application Information

To be submitted with a Building Permit Application



Acceptable Spans for Deck Beams and Joists

(Refer to Diagrams above)

Wood Beam Size (J) (NBCC 2010 Table A-8)

Wood Beam Size (J)	Supported Joist length of Wood Deck Joists				
	"Supported Joist" length means ½ the sum of the joist spans on both side of the beam (1/2 of "F" + "G" = Supported Joist Length. Round up to Nearest Length)				
	8'-0" (2.4 m)	10'-0" (3.0 m)	12'-0" (3.6 m)	14'-0" (4.2 m)	16'-0" (4.8 m)
	Maximum Span of Wood Beam between Columns (Z)				
3 - 2" x 8" (3 - 38 mm x 184 mm)	10' (3.07 m)	9'-4" (2.85 m)	8'-7" (2.63 m)	8' (2.44 m)	7'-6" (2.28 m)
4 - 2" x 8" (4 - 38 mm x 184 mm)	10'-2" (3.38 m)	10' (3.14 m)	9'-8" (2.95 m)	9'-2" (2.8 m)	8'-7" (2.63 m)
3 - 2" x 10" (3 - 38 mm x 235 mm)	12'-10" (3.92 m)	11'-6" (3.52 m)	10'-6" (3.22 m)	9'-9" (2.98 m)	9'-2" (2.79 m)
4 - 2" x 10" (4 - 38 mm x 235 mm)	14'-2" (4.32 m)	13'-2" (4.01 m)	12'-2" (3.71 m)	11'-4" (3.44 m)	10'-7" (3.22 m)
3 - 2" x 12" (3-38 mm x 286 mm)	15' (4.57 m)	13'-4" (4.09 m)	12'-4" (3.73 m)	11'-4" (3.46 m)	10'-6" (3.23 m)
4 - 2" x 12" (4-38 mm x 286 mm)	17'-4" (5.25 m)	15'-6" (4.72 m)	14'-2" (4.31 m)	13' (3.99 m)	12'-3" (3.73 m)

Wood Joist Size (W) (NBCC 2010 Table A-5)

Joist Lumber Size (W)	Spacing of Joists (on Centre) (W)	Maximum Span between supports (F)	Spacing of Joists (on Centre) (W)	Maximum Span between supports (F)	Spacing of Joists (on Centre) (W)	Maximum Span between supports (F)
2" x 6" (38 x 140 mm)	12" (300 mm)	9'-4" (2.86 m)	16" (400 mm)	8'-6" (2.60 m)	24" (600 mm)	7'-5" (2.27 m)
2" x 8" (38 mm x 184 mm)	12" (300 mm)	12'-4" (3.76 m)	16" (400 mm)	11'-2" (3.42 m)	24" (600 mm)	9'-9" (2.99 m)
2" x 10" (38 mm x 235 mm)	12" (300 mm)	15'-9" (4.81 m)	16" (400 mm)	14'-4" (4.37 m)	24" (600 mm)	12'-6" (3.82 m)
2" x 12" (38 mm x 286 mm)	12" (300 mm)	19'-2" (5.85 m)	16" (400 mm)	17'-5" (5.31 m)	24" (600 mm)	15'-2" (4.64 m)

Footing Options (H)

A deck may be supported with a 24" X24" column footing and a minimum 10" Sono-tube. The use of a properly sized "Footing Tube or "Big Foot" footing and Sonotube combination is also accepted.

The use of buried wood posts for any deck is prohibited.

This pamphlet has no legal status and cannot be used as an official interpretation of the various codes and regulations currently in effect.

Deck Permit Application Information

To be submitted with a Building Permit Application

Refer to Diagrams	Dimension
A	Height of Deck above Finished Grade (Ground Level)
B	Height of Deck Guard (Handrail)
C	Footing Depth below Finished Grade for Frost Protection 1.2m (4') Minimum-Closer than 5' from Foundation, Footing to Match Depth of Foundation Footing
D	Openings in Guard Maximum 100mm (4") Opening
E	Distance Between Guard Posts- Maximum 2.4m (8') Apart-Minimum 4"x4"
F	Span of Floor Joist (<i>See Chart</i>)
G	Cantilever Distance (<i>if Applicable</i>)
H	Column Footing Size & Type (<i>See Section</i>)
J	Beam Size (<i>See Chart</i>)
K	Wood Column Supporting Wood Beam Minimum Column Size 140mm x 140mm (6"x6")
W	Joist Size and Spacing (<i>See Chart</i>)
X	Deck Width
Y	Deck Length
Z	Distance Between Support Columns (<i>See Chart</i>)

If your deck project differs from the supplied diagrams, please provide a sketch providing the same information as required above.

A sketch of stairs and railing (guard) detail will be required.

Construction that varies from the submitted plans is prohibited.